

Echo

The internal newspaper of Marconi Radar Systems and its people

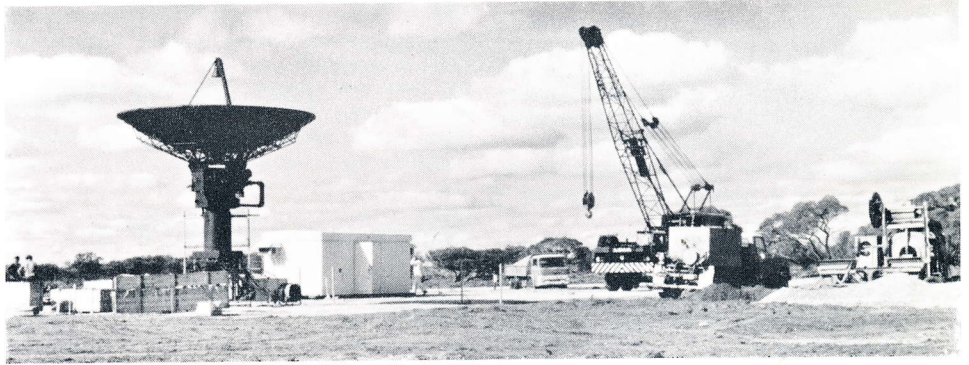
Set up in the scrub

'Is "Bruce" Woodcock about?' 'No,' said a colleague in his room. 'He may be five minutes or he may be three months. You can never be sure with Bruce.'

Bruce was only five minutes. He had been away for three months—ten weeks actually—to Woomera with an installation team to set up a new tracking radar on the range.

Our team had erected it themselves from the concrete hardstanding except for the help of an Australian Government crane, its driver and his slinger.

The job was complete, the installation commissioned, and one of the team, Nick Carpenter of Field Services, is staying with it as Resident Maintenance Engineer. He and his wife will be living in Woomera village for the next three years.



Photos by "Bruce" Woodcock

Outback

Bruce says that we think of Woomera as being in the distant outback, but it is relatively close to civilization, only an hour and a half from Adelaide by air, and the great deserts lie to the north and west of it. Distances are so vast in Australia that the whole of the British Isles would fit comfortably into South Australia where Adelaide and Woomera are situated.

The village has been built for engineers working on jobs like ours, with single and married quarters—flats and houses; and here our engineers were able to link up with another MRSL team from Bushy who were working on a site twenty-five miles away.

This year the football field was flooded. Hardly surprising really; it was the dried-up bed of a lake. This is the first time it has held water for about six years, but other lakes have been dry for much longer periods.

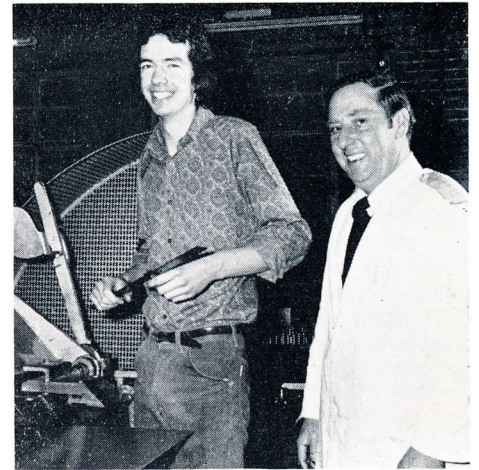
(Continued on page 4)

Richard wins a first

Richard Wilson of Sheet Metal Section, Baddow Workshops, has been awarded first prize equal, the City and Guilds Institute's bronze medal for fabrication and welding.

This was the result of Richard's 1973 course examinations at the Mid-Essex Technical College. He completed his craft apprentice studies at Crompton Works and at Baddow in 1972 winning a credit for his work. He was then sponsored by the Company for the course of technician's studies at the Technical College and his medal is a national award. Congratulations Richard.

Richard Wilson, Sheet Metal, Baddow, left, with Chargehand Dave Male



Installation team

Top right: Andy Emberton and Colin Brown. Andy came out after the main installation for work during the commissioning stages.

Right: The installation team at Woomera. Left to right, Colin Brown of Engineering B, Cliff Warman, Field Services; Robin Prentice, Engineering A; Nick Carpenter, Field Services, now Resident Maintenance Engineer; "Bruce" Woodcock of Engineering D; and Peter Robinson of Field Services.



Night bid for contract

Bob Shostak, Sales Engineer, had a tender to submit in a hurry; and a great deal of information had to be prepared before he left on a flight to Colombia in South America within twenty-four hours.

So Bob and a Sales Service team got down to the preparation of proposals for this special contract, collecting the information, making the final arrangements and corrections, collating and typing the whole thing.

They worked all day and on through the night, only going home as their jobs were completed: Amy Davis, Elaine McPhie, Janice Smith, Joyce Fairhurst, Jill Spencer, Harry Cole, Robin Webb, and finally Bob Holloway left at seven when Bob Shostak went for a bath and breakfast and then to London Airport to catch the 10.30 for Bogota, Colombia.

Co-operation in the crisis has good results

In spite of all the setbacks we have been having it is refreshing to know that people throughout Marconi Radar Systems at Chelmsford, Leicester and Gateshead have all pulled their weight during this crisis period.

We have maintained a full working week in the Chelmsford Works by squeezing working hours into all possible daylight and power-available periods, and for two days a week we have worked on power generated by our own plant engineers.

The installation of the generator was a long term plan completed last summer by the untiring efforts of our Establishments Manager and Plant Engineer as a safeguard against power cuts ahead. This generator has supplied about 500 kVA of power two days a week without a hitch and has enabled work to progress.

Maintaining progress

Ron Bernhardt, Works Manager, Chelmsford, says: 'By trimming the site and adjusting the load on the sub-stations we have been able to keep most machines and processes working. In this way, with the aid of the generator, we have managed to maintain a normal five-day working week.'

'Everybody has co-operated and shown a great spirit. Production has been running extremely well.'

At Leicester standby generators have been in operation at both Blackbird Road Works and New Parks, and Blackbird Road have had the good fortune of gas fired central heating. But the two establishments are not in the same area of Leicester and have suffered the extreme inconvenience of having grid power on different days. Nevertheless most parts of the factory, except the machine shop, have been practically normal.

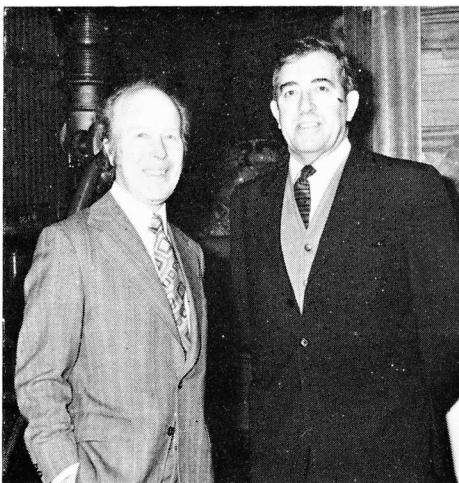
Gateshead were not so fortunate initially, and a large part of the shop floor was on a reduced week; but in the last week of January the generator was commissioned and reduced the number of people on short time.

Not plain sailing

It has not all been plain sailing at Cromptons. We have our problems, starting with fuel for transport and for the generator. People in offices—Engineers, Sales, Field Services, Contracts, Accounts, executives—have all had to work in half-light, no light, any light they can find, and much of the time in half heated surroundings in order that all available power should go to production so that we can honour our commitments.

In the face of this we have won new contracts, and work on these must proceed. Tenders must be prepared and are being submitted for projects we can win. Only lately a Sales Service team worked all night with a sales engineer to produce data for him so that he could catch the 10.30 plane from London to South America next morning. Here at home we are doing our level best to support our sales engineers.

A determination to get the work done is showing throughout the Marconi community; this is the spirit which will support our Company and each one of us.



Plant Engineer, Jimmy Eaton, left, whose team installed the generator and switch power to production people with, right, Establishments Manager Rod Mackley who is responsible for the efficient running of all establishments in the Chelmsford area.

Keeping the home plant running

On the days when the generator is running at Cromptons power is distributed for production in relation to requests from Departmental Chiefs and projects they have in hand. No power is supplied for office lighting except design offices and E building where there is no natural light.

Power control

Anyone who wants power, or more power, must phone the Plant Engineer for it, to see when he can be fitted in. It's quite a problem to be fair to everyone.

All these requests are taken by Dobbie, Maisie Dobson his secretary, who puts them before the PE himself, while down in the engine room is Peter Clegg who responds to calls from his Chief and switches power in turn to those in need.

New projects

Even while all this is going on Jimmy Eaton, Plant Engineer, quietly plots his next move in the Works. He has just finished new offices for supplies and the fitting out of the new test area in E building (Highbays). Don Ketley of Plant Engineers staff prepared all the layouts for this job, including the equipment arrangement. Specifications and estimates were drawn up for the new floor, lighting and decoration. Orders were placed with contractors and Eddie Miller programmed and supervised the scheme. The PE, himself, organized the colour scheme, with spring green walls, light orange roof and mauve beams and runners for the crane.

Arthur's dream cottage

As soon as Arthur Randall retired from the mechanical assembly department at Blackbird Road, Leicester, in January after completing 31 years' service with the Company, he was off with his wife Celia to a cottage in Wales.

Arthur and his wife bought the cottage in the tiny hamlet of Henllan, near Llandyssul, Cardiganshire, nearly three years ago when

(Continued in next column)

Well done Sally

Congratulations to Sally Holman who has been selected to captain the East of England ladies, under 23, at hockey. This was announced at Folkestone at New Year during the Eastern Counties championship there.

Regular county player

Sally has played regularly for Chelmsford and Essex as well as East of England, and was reserve for England last season.

This is her third season, and the last under 23; but she has another England trial to play shortly. We wish her all the best.

Sally Holman



(Continued from column 2)

they were on holiday. In Arthur's words it was a 'bit of a wreck', but he has since had it restored. Now only the garden needs attention.

Arthur joined the BTH Company in 1943. He was a mechanical fitter in the feeder section and later became chargehand of the section for about 20 years before moving to mechanical assembly. For many years he was a shop steward and a member of the joint production consultative committee. He first met his wife at Blackbird Road, where she herself worked for 14 years.

At his presentation, works manager Owen Jones presented Arthur with a slide projector and coffee percolator on behalf of the Company, and a transistor radio and condiment set from his colleagues.

Pictured at the presentation are (from left): P. H. Rawson, senior personnel officer; W. O. P. Jones, works manager; Arthur Randall; S. W. Heath, manufacturing manager; A. G. Copson, general foreman—mech. assembly; and A. E. Dobbs, section foreman—mech. assembly.



MRS L GIRL LEICESTER WINNER

We would not be surprised to hear of a flood of applications to join the Computer Applications department of Marconi Radar Systems at Leicester for twenty-year-old Shirley Morrith, who is an engineering assistant on the full-time staff of the department, has been chosen Miss AEI 1974. Twenty-one-year-old Ann Winterbottom, also from Computer Applications, came third in the contest.

Beauty and brains

Both girls represent not only beauty, but brains. Shirley, whose home town is Ipswich, transferred her engineering apprenticeship from Chelmsford to Leicester last September. She measures a neat 36-25-37, and her hobbies are dressmaking, swimming, karate, squash, painting and ornithology. She takes a keen interest in student and graduate activities.

Ann, a student apprentice, returns to Lanchester Polytechnic, Coventry, in September for the final year of her degree course, and hopes to join the full-time staff of Computer Applications in 1975. She hails from Blackpool, and her vital statistics are 37-26-37. She is interested in karate, swimming, badminton and campanology.

Shirley Morrith, right, and Ann Winterbottom.



Congratulations

Dick Bradly, MRS L Assistant Purchasing Manager, was among those who received Diplomas in Management Studies from the Anglian Regional Management Centre, Danbury Park, at a recent presentation by Mr. Brian Harrison, Maldon's former M.P. Here is Dick, left, above, with Bryan Aldred, Marconi Research Laboratories, and Roger Godfrey of MCSL.



Above: Mick Reilly, MRS L Production Engineers, Crompton Works, won third prize, £100, in the MASC's recent car draw and is pictured here at the Club with Mrs. Eleonore Stratton, PCM, MCSL, New Street, wife of Charlie Stratton, MRS L Production Control, who won the car.

For the kiddies

The Gateshead children's parties both went off most successfully. The first, for the younger children, age groups five to nine years, was held in the canteen. This party, always boisterous, had all the ingredients to ensure a happy and entertaining afternoon.

The second party, for the older children, age groups ten to fourteen years, was a visit to Sunderland Empire Theatre to see the pantomime 'Humpty Dumpty'. Coaches were laid on to take the children and their parents to and from the theatre, and there was ice cream for all at the interval.

Chelmsford's dance

Right: Here enjoying themselves at Chelmsford's annual buffet dance held at the MASC are, left to right, Owen Hawkes, Pam Barford, Don Reed, all Field Services, Cromptons, and Don's wife Sylvia; Peggy, and John Bentley, MCSL, Writtle, and Peggy's sister Barbara Nunn, Systems B, Cromptons.



The Company is what we make it

As I write

As I write this editorial, our thoughts are dominated by the fuel crisis, industrial unrest and uncertainty for the future. At the moment we are better placed than most industrial firms; we have standby power to enable a reasonably good level of production to be maintained, we have stocks of fuel for a fair period and our material stocks are satisfactory. It appears tragic to me that with our many new facilities complete or nearing completion, and with a better order book than we have had for several years, our future should be clouded by possible dangers from so many factors beyond our control, such as transport, fuel and power, supplies of steel and components.

On the other hand

On the other hand, if the industrial disputes are settled and things become more normal reasonably quickly, we can look forward to a period of very satisfactory progress.

Results appreciated

I am most grateful to all Marconi Radar people for the way in which work has carried on through the difficulties and inconveniences of the past few weeks, and for the efforts made to maintain our business; I can assure you that the results have been appreciated. I feel also that communications are improving, although there will always be room for further improvements. Each member of the company is perhaps a little more closely identified with Marconi Radar—not only with our successes but also with our problems. In the end the Company is what we all make it; if we set our mind to it collectively it can be a better place to work in and we can all get more satisfaction out of "the daily round".

JOHN SUTHERLAND,
Managing Director

Flair and experience

Flair and experience play a great part in the organization of satisfactory interests for the Gateshead Foremen's and Supervisors' Association.

As the committee are fortunate in having a very fair share of these attributes they have, again, maintained their reputation this season. For example: members joined in the Festival Year celebrations of the thirteen hundredth anniversaries of St. Peter's, Wearmouth, and St. Paul's, Jarrow; and they entertained the Reverend Graham Trasler, vicar in charge of the celebrations, who gave a very enjoyable and educational talk, ably supported by projector slides, on the history of these areas.

Outside interest

The Association visited an incinerator disposal plant, and in the company of the plant manager saw how this vast engineering complex combats the enormous task of ensuring the disposal of all types of domestic and industrial refuse, leaving infinitely little waste for the deposit dump.

The Lecturer in Extra Mural Studies, Durham Agricultural College, Mr. Churchyard, invited the Association to visit their experimental and development farm. This particular industry is full of surprises. One interesting feature for people in production was the sophisticated system for the fine scheduling of the distribution of beef and pork to meet market demand.

President's new job

We have had many pleasant social gatherings at the Club bar, and one of these coincided with the departure from Gateshead Works of the Association's long serving President, Ron Sherwin, who is now General Works Manager, Chelmsford and Gateshead. The evening was well supported and a great success. Mr. Sherwin was presented with a decanter and sherry glasses in 'Waterford Crystal' by Chairman Ossie McClurry on behalf of the members of the Gateshead Foremen's and Supervisors' Association.

This January, of course, the Association held their annual dinner. The dinner is considered the highlight of the season, and was, as always, a tremendous success. The venue was the Prince of Wales Suite, in the County Hotel, Newcastle-upon-Tyne.

Appreciation

R. Sherwin, formerly Works Manager, Gateshead, has taken up his new post as General Works Manager, Chelmsford and Gateshead.

In appreciation of his services, R. E. Amos, on behalf of Gateshead Works, presented him



R. Sherwin with Gateshead Foremen's and Supervisors' Association committee. Left to right, J. Dixon; T. Lavin, Treasurer; R. Archer, Secretary; J. Walker; R. Sherwin, President; R. McLlwraith; R. Kennedy; O. McClurry, Chairman.

with two sketches by James Alder, one of the goldfinch and the other of the chaffinch. Both these birds are to be found on the banks of the Tyne, sometimes in the Works area. And, on behalf of the S and SC, E. Pearson presented him with a pair of binoculars.



Long service

Above left: Sixty-three-year-old Mrs. Beatrice Eames has retired from the electrical assembly department, Blackbird Road, Leicester, after more than thirty years' service, and had travelled over thirty miles each working day to and from her home in the Leicestershire mining village of Bagworth. At her presentation she received a dome clock from the Company and a picture from her colleagues.

Above right: Harry Ball, gauge inspection department, Blackbird Road, Leicester, retired after 48 years' service and would have completed half a century but for two short breaks. He joined BTH in 1923, worked at Rugby until 1941, and then moved to Leicester. Works Manager Owen Jones presented an automatic tea-maker and a clock from the Company and an infra-red grill from friends.



Tie designers

Above: The winner of Leicester's 'Design-a-Tie' competition was Trevor Vaughan, Standards dept., New Parks, whose design for a Company tie won by a margin of 100 votes. Here are four of the finalists, left to right, Mrs. Vera Klun, Mrs. Beverly Goulbourn, Peter Way, general manager, Trevor Vaughan and Wilfred Vears, the other was J. R. Miller of Watford.

'Physics at work'

A team of MRSL students and graduates represented the Company at a 'Physics at Work' exhibition at the City of Leicester Polytechnic. In the background of our picture, below, are Chris Russell, vacation student, Shirley Morrill, engineering assistant, and David Vallis, graduate engineer, who are showing Polytechnic lab. technicians a Royal Navy model of HMS Bristol. MRSL displays and demonstrations included laser techniques and models of various equipment.



(Continued from page 1)

Right: Walking on the water? The dried-out salt bed of Lake Hart.



Scouting around to see what the country was like, Bruce went off into the sandy scrub along Wild Dog Creek, and away to Fred's Marsh where he found fossils, among them fossilized wood. Kangaroos were everywhere—they are very hard to see when crouching, hump backed, to eat, and even sheep and cattle roamed almost wild. In one of the gorges he came to a waterhole, and found ancient native caves with flint arrow heads.

As he spoke a glint of triumph lurked in the weather-beaten prospector's eye. And out of a polythene bag from his pocket he pulled a glistening green stone he had brought home with him. 'Opal,' he said, putting it down on the desk. 'Should be lucky.'

The production and installation of this tracking radar at Woomera has been done to a very tight cost and time schedule. The result is that another radar for Woomera has now been ordered from MRSL by the British Ministry of Defence.